

標準リチウムイオン電池パック (1S1P)

OTTLI106600

初期費用を抑え、短期間での供給が可能な標準パック

特長 Features

- 開発費・金型費・認証費が不要
- 一次／二次保護機能が充実
- 落下、衝撃に強い（セルホルダーによる固定）
- 急速充電、高レート放電に対応
- セル温度検知用 NTC サーミスタ搭載
- MOQ：600pcs
- 認証：UN38.3、PSE（要機器組み込み落下試験）
IEC62133-2、CE（EMC および電池規則）



1S1P

Lithium Ion Battery Pack

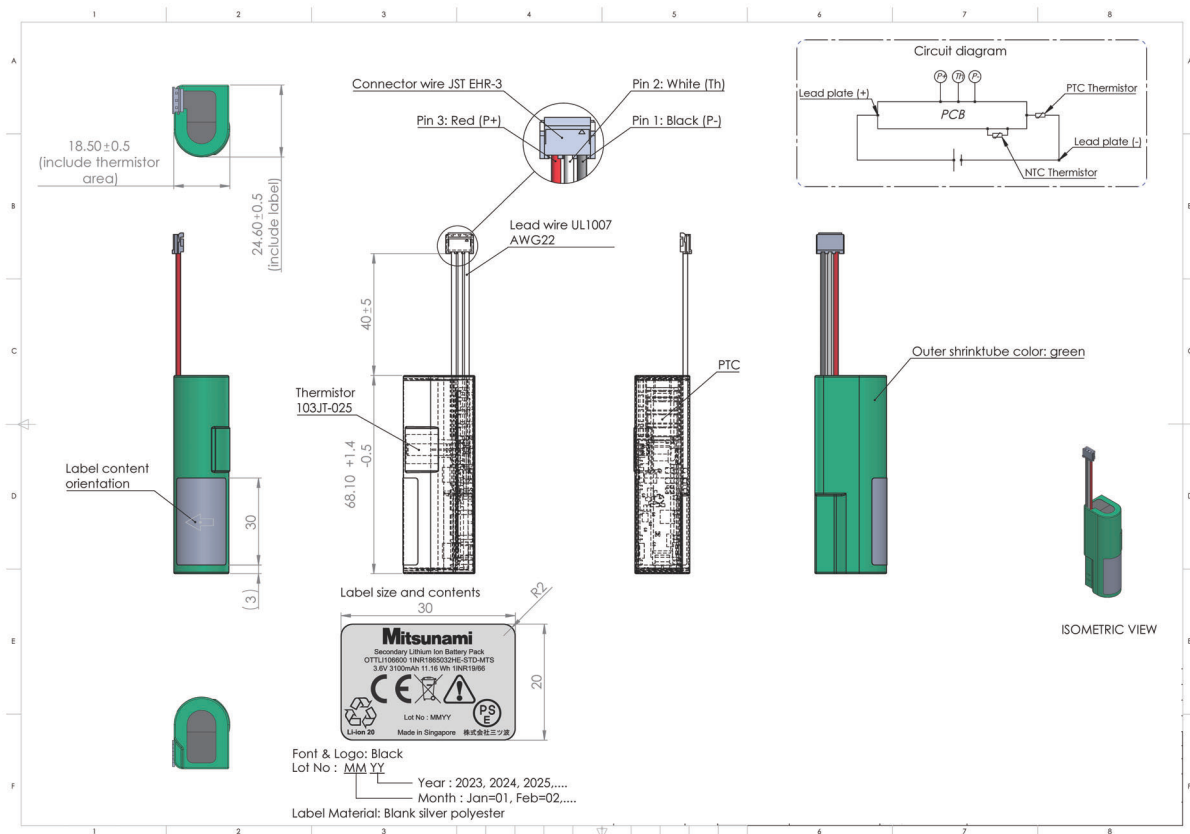
一般仕様 General specifications

Item		Specification
Capacity	Minimum	3100mAh by standard charge and discharge
	Nominal	3200mAh by standard charge and discharge
Nominal Voltage		3.60V
Device Discharge Cut-off Voltage		3.00V (Recommended)
Charging Current		Std Charge = 1.55A
		Fast Charge = 3.00A
Charging Voltage		4.20V
Continuous Discharge Current (Max)		3.00A
Internal Resistance		TBD
Weight		TBD
Operating Temperature		Charge 0°C ~ 45°C
		Discharge -20°C ~ 60°C
Storage Condition		1 year -20°C ~ 25°C
		3 months -20°C ~ 45°C
		1 month -20°C ~ 60°C
Connector Wire Rating Current		3.00A

保護回路仕様 (@25degC) Protection circuit specifications

No.	Item	Specification	Unit
1	Over-charge Detection Voltage	4.28 ± 0.020	V
2	Over-charge Release Voltage	4.08 ± 0.050	V
3	Over-charge Detection Delay Time	1.0	sec
4	Over-discharge Detection Voltage	2.80 ± 0.050	V
5	Over-discharge Release Voltage	2.80 ± 0.050	V
6	Over-discharge Detection Delay Time	32	msec
7	Over-current Discharge	3.5–7.4	A
8	Over-current Discharge Delay Time	16	msec
9	Over-current Charge	3.5–7.4	A
10	Over-current Charge Delay Time	16	msec
11	Short Circuit Detection Delay Time	280	μsec

外形図 Dimensions



連絡先

株式会社三ツ波
 みらい事業推進部
 東京都品川区西五反田2-30-11
 TEL: 03-3492-7780

20240222

Mitsunami
 Proposal for electronics